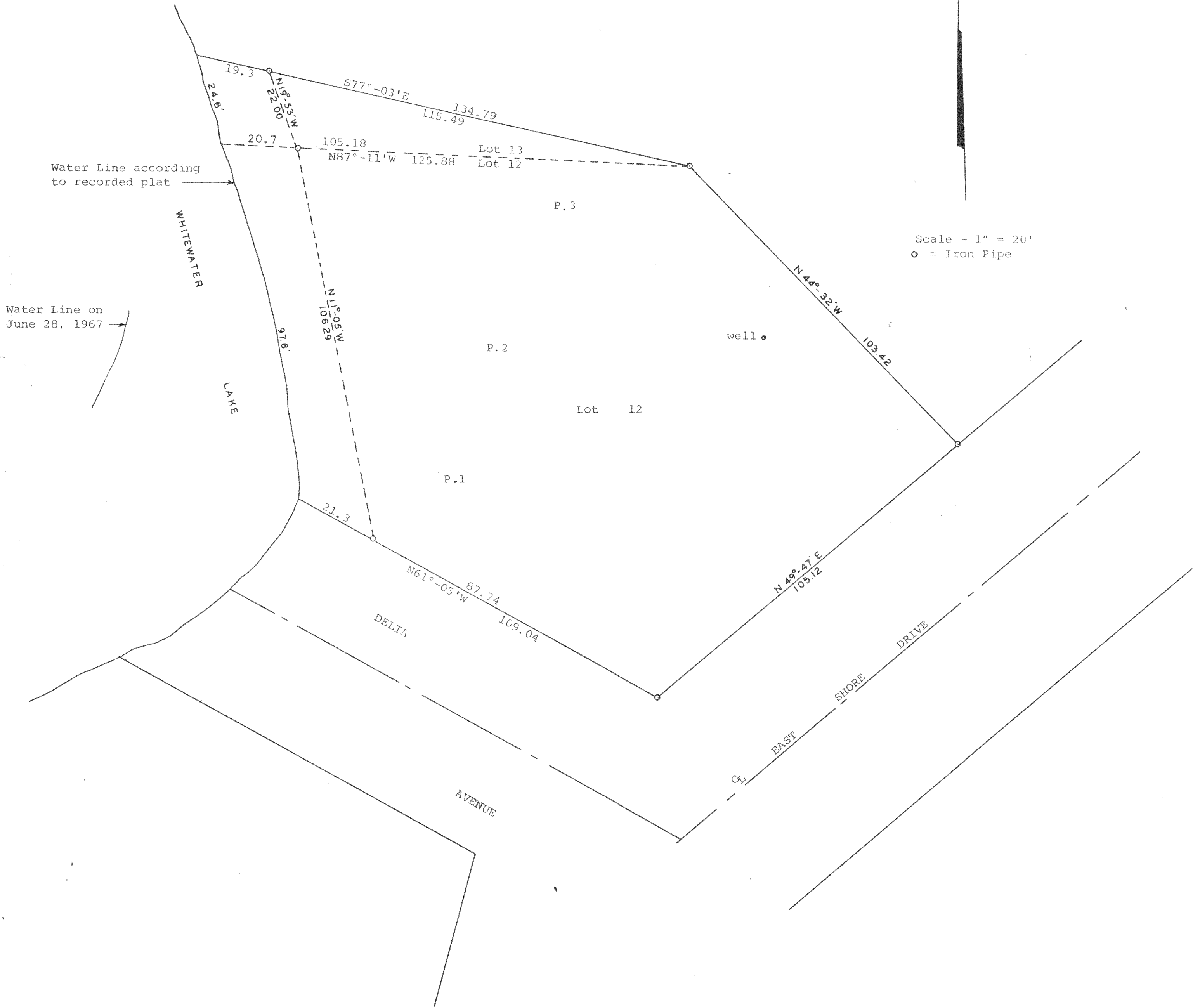


GEORGE T. DUNHAM
SURVEYING & SUBDIVIDING
DELAVAN, WISCONSIN



Scale - 1" = 20'
○ = Iron Pipe



Plat of survey of Lot 12 and part of Lot 13 of THORNE HEIGHTS, a subdivision located in the South ½ of Section 35, T 4 N, R 15 E, Walworth County, Wisconsin.
July 4, 1967

George T. Dunham
George T. Dunham, Surveyor